

Download pattern 504D Tunic ●● from burdafashion.com – Instructions

Burda sizes 34, 36, 38, 40, 42, 44
Length from waist, 33 cm (13")

Materials:

Satin with crosswise stretch, 145 cm (57") wide:
Sizes 34, 36, 38: 1.15 m (1¼ yds),
Sizes 40, 42, 44: 1.20 m (1⅝ yds).
Vilene/Pellon fusible interfacing G 785.
2.80 m (3⅜ yds) satin ribbon, approx. 2 cm (¾") wide. 1 invisible zipper, 40 cm (16") long and special presser foot.

Recommended fabrics: Lightweight, softly draping dress fabric, with or without elastane.

Paper pattern (DIN A sheets):

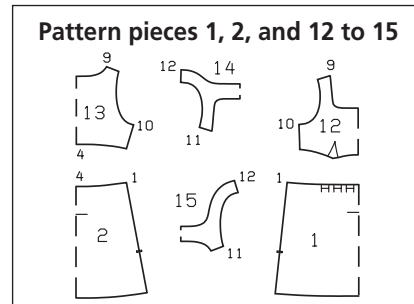
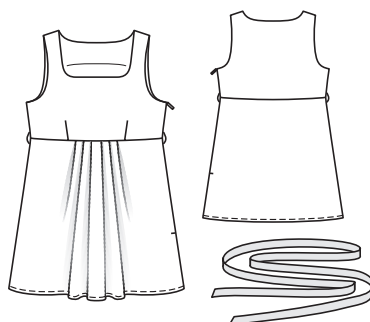
The pattern pieces are printed on 15 sheets, each framed by a thin line. Wait until all of the sheets have been printed. Lay the sheets in the correct positions (see extra sheet with the overview of the printed sheets).
Cut each sheet along the thin lines at the top and right edges. Beginning with the lower left sheet, glue all sheets together, exactly on the thin lines.

Choose your size according to the Burda measurement chart: tops according to your bust measurement and pants according to your hip measurement. Adjust pattern pieces, if necessary, by adding or subtracting the number of cm (inches) that your measurements differ from the measurements given in the Burda chart.

Cut out the pattern pieces in your size.

Cutting:

The cutting layout below shows how the pattern pieces should be laid on the



fabric. Make sure that the straight grain line marked on each pattern piece lies parallel to the selvages or the fold of the fabric.

Seam and hem allowances:

1.5 cm (⅝") at all seams and edges

Satin:

1 Lower front, on fold	1x
2 Lower back, on fold	1x
12 Upper front, on fold	1x
13 Upper back, on fold	1x
14 Front facing, on fold	1x
15 Back facing, on fold	1x

Interfacing

See gray shaded pieces in cutting layout. Iron interfacing pieces to wrong side of fabric pieces.

Transfer pattern markings to fabric pieces:

Transfer pattern outlines (seam and hem lines) and all pattern lines and markings (except straight grain lines) to wrong side of fabric pieces using BURDA dressmaker's carbon paper and a tracing wheel. Follow instructions included with carbon paper. Hand baste along pleat lines to make these lines visible from the right side of the fabric

Sewing:

Please note: When basting and stitching seams, the right fabric sides must be facing. Tie-off beginnings and ends of seams with backstitching.

■ Stitch bust darts. Press darts toward center front.

■ Lay pleats in lower front in direction of arrows and baste.

■ Pin lower front to upper front and pin lower back to upper back, right sides facing in both cases. Stitch. Finish

edges of seam allowances together and press up.

■ Lay front facing on front and lay back facing on back, right sides facing in both cases. Pin armhole edges and neck edge together. Stitch together along neck and armhole edges, beginning and ending each seam 2 cm (¾") below shoulder seam line. Trim seam allowances and clip curves. Turn front facing (and not back facing) to inside. Slide the front shoulder edges between the not yet turned back shoulder edges – the right sides of front and back and of facings lie together. Stitch shoulder seams on tunic and facing. Pull the front piece which lies inside and the front facing up slightly and press seams open, using the handle of a wooden spoon as an ironing aid. Then stitch the remaining seam sections closed. Pull the front down, out of the shoulder edges of the back, thereby turning the back facings to the inside. Press the neck and armhole edges.

■ Lay front on back, right sides facing. Pin right side seam, turning the facings on armhole edges up again and also pinning narrow facing edges together. Stitch. Press seam open and finish edges of allowances. Turn facings to inside again and sew to seam allowances of side seam.

■ Invisible zipper, left side seam:

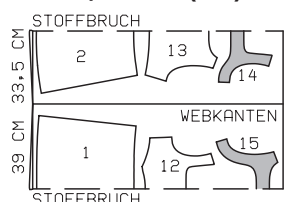
On left armhole, turn facings up again. Finish left side seam edges.

Open the zipper and use your thumbnail to press back the coil so that the seam line between the zipper tape and the coil is visible. Place the opened zipper, with right side facing down, on the right side of the back slit edge. Zipper teeth begin at attachment seam of bias strip. In order to stitch the zipper exactly along the marked seam line, you must first calculate the distance be-

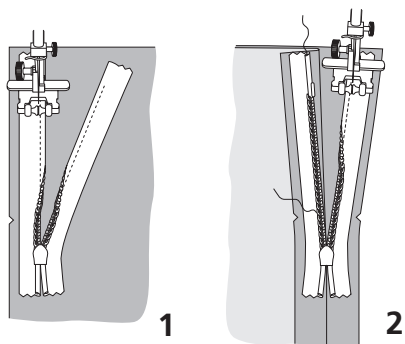
Cutting layout

Sizes 34 – 44

Satin, 145 cm (57") wide



On a double layer of fabric, the right side faces in.



the front slit edge. Pin the upper end of the zipper tape in place (distance from fabric edge is 5 mm / 3/16"). Open the zipper again. Place the presser foot on the upper end of the zipper so that the coil lies in the notch to the left of the needle (2). Stitch the zipper in place from the upper edge to the end of the slit.

Close the zipper. Now pin the left side seam below the zipper. Lay the loose lower ends of the zipper out of the way, away from the seam. Stitch the seam, stitching up from the lower edge and stitching as close as possible to the last stitches of the zipper seams. Press side seams open.

Turn facings to inside again, turn raw edges under, and sew to zipper tapes by hand.

■ Trim hem allowance to 1 cm (3/8") wide. Finish edge of hem allowance. Turn hem to inside and press. Topstitch 5 mm (3/16") from fold edge, thereby catching hem.

■ Sew thread bars (to hold tie band), approx. 3 cm (1 1/4") long, at each side seam, over horizontal seam. To do this, stretch 4 to 6 threads, then work closely spaced buttonhole stitches over stretched threads.

Trim ends of tie band at angles.

tween the zipper tape and the edge of the fabric as follows: width of seam allowance minus 1 cm (3/8") width of zipper tape = 5 mm (3/16"). Pin the upper end of the zipper tape in place at the calculated distance from the fabric edge. The zipper teeth should begin at the stitching line on armhole edge. Place the presser foot on the zipper so that the coil lies in the notch to the right of the needle (1). Stitch the zipper in place from the upper edge to the marked end of the slit. Close the zipper. Lay the second zipper tape, right side facing down, on the right side of

BURDA SIZE TABLE

WOMEN'S SIZES (height 168 cm/ 5 feet 6 inches)											
Burda size		34	36	38	40	42	44	46	48	50	52
Bust	cm	80	84	88	92	96	100	104	110	116	122
Waist	cm	62	66	70	74	78	82	86	92	98	104
Hip	cm	86	90	94	98	102	106	110	116	122	128
Front waist length	cm	43	44	45	46	47	48	49	50	51	52
Bust depth	cm	25	26	27	28	29	30	31	32	33	34
Back length	cm	41	41	42	42	43	43	44	44	45	45
Back width	cm	33.5	34.5	35.5	36.5	37.5	38.5	39.5	41	42.5	44
Shoulder	cm	12	12	12	13	13	13	13	14	14	14
Arm length	cm	59	59	60	60	61	61	61	61	62	62
Upper arm	cm	26	27	28	29	30	31	32	34	36	38
Neck	cm	34	35	36	37	38	39	40	41	42	43